

A large, stylized tree graphic in a light teal color is centered in the background. The tree has a thick trunk with two curved branches extending outwards, each ending in a spiral. The canopy is composed of several layers of pointed, leaf-like shapes.

WRCA 2023 Annual General Meeting

April 5, 2023

Evening Agenda

- Wine & Cheese
- AGM Setup
- AGM
- AGM Closure

Setup → Quorum

We need...

☐ 15 members

☐ 7 directors



Setup → Basics of Roberts Rules

- ❑ Speaker will make a recommendation
- ❑ A member will make a motion
- ❑ Another member will second the motion
- ❑ Vote

Setup → Establish Secretary

Motion to appoint Secretary for the meeting



Agenda

- Approve 2022 AGM Minutes
- Introduction of Board Members and Staff
- Treasurers Report
 - *Acceptance of Financial Statements*
 - *Appointment of Auditors*
- Presidents Report
- Volunteer of the Year
- Election of Directors
- Adjourn

2022 AGM Minutes

Motion to approve 2022 AGM Minutes

Introducing our Board and Staff

Name	2022-2023 Role
Andres Galindo	Strategy
Ashlyn Beatty	Member at Large
Bibiana Rickova	Member at Large
Chris Nyberg	Casino, Trico Rep
Don Boykiw	Funding
Dustan Byrnes	Secretary
Gord Rouse	Civic Affairs
Greg Humphreys	Member at Large
Haley Anderson-Hartos	Social
Jason Carling	President
Kody Shiels	Treasurer
Marshall Horne	Member at Large
Mike Krisa	Member at Large
Peter Gibson	Vice President (Acting), Facilities
Roger Lohrey	Member at Large
Tom Firth	Communications

Name	2022-2023 Role
Anna Glickman	Community Services Manager
Faye Bilinsky	Office Administrator
Adam Bartolome	Facilities
Ron Ilsley	Bookkeeper



Financials

Statement of Financial Position

WILLOW RIDGE COMMUNITY ASSOCIATION
STATEMENT OF FINANCIAL POSITION
(Audited)

As at August 31, 2022

➤ Healthy cash and overall balance sheet

➤ Long term debt is the CEBA loan and only \$30k if repaid by Dec 31, 2023

	<u>2022</u>	<u>2021</u>
ASSETS		
Current		
Cash and cash equivalents, unrestricted	\$ 64,124	\$ 269,401
Investment (Note 13)	200,790	30,270
Accounts receivable	2,333	15,420
Goods and services tax recoverable	4,436	6,705
Prepaid expenses	9,551	6,863
	<u>281,234</u>	<u>328,659</u>
Externally Restricted Assets (Note 3)	85,042	174,319
Property and Equipment (Note 4)	3,420,715	3,566,462
Investment in Family Leisure Centre (Note 5)	1	1
	<u>\$ 3,786,992</u>	<u>\$ 4,069,441</u>
LIABILITIES AND NET ASSETS		
Current Liabilities		
Accounts payable and accrued liabilities	\$ 23,400	\$ 36,180
Payroll liabilities	1,592	1,290
Deferred revenue	27,680	8,698
Hall deposits (Note 6)	7,366	17,236
Held in trust (Note 11)	-	519
Deferred cash contributions (Note 3)	85,042	174,319
Total Current Liabilities	<u>145,080</u>	<u>238,242</u>
Long Term Debt (Note 12)	40,000	40,000
Deferred Capital Contributions (Note 8)	<u>3,276,965</u>	<u>3,419,784</u>
Total Liabilities	<u>3,462,045</u>	<u>3,698,026</u>
Net Assets		
Unrestricted	181,197	224,737
Invested in property and equipment	143,750	146,678
	<u>324,947</u>	<u>371,415</u>
	<u>\$ 3,786,992</u>	<u>\$ 4,069,441</u>

Statement of Operations

WILLOW RIDGE COMMUNITY ASSOCIATION
STATEMENT OF OPERATIONS
(Audited)

For the Year Ended August 31, 2022

➤ Rentals doubled due to less lockdowns.

➤ Memberships have increased

➤ Small surplus before non-cash accounting adjustments.

	<u>2022</u>	<u>2021</u>
Revenue		
Hall / field rentals	\$ 157,801	\$ 78,325
Grants contributed to operations (Note 10)	104,126	97,964
Grants contributed to parks foundation	50,598	74,989
Sports and recreation (Schedule 1)	48,336	26,306
Casino contributions (Note 9)	32,417	31,888
Membership	21,165	13,173
Miscellaneous contributions	3,022	2,264
Gain on disposal of assets	3,000	-
Interest Revenue	1,917	455
	<u>422,382</u>	<u>325,364</u>
Expenses		
Wages and benefits	190,496	170,223
Grants contributed to parks foundation	50,598	74,989
Repairs and maintenance	40,580	56,359
Sports and recreation (Schedule 1)	33,198	1,582
Administrative expenses	28,648	24,982
Utilities	28,428	18,377
Social functions	24,357	1,446
Insurance	10,903	10,553
Professional fees	7,554	6,727
Telephone	1,823	3,583
	<u>416,585</u>	<u>368,821</u>
Excess of revenue (deficit) before amortization	5,797	(43,457)
Less: Amortization expense	(270,520)	(264,647)
Plus: Amortized deferred capital contributions (Note 8)	<u>218,255</u>	<u>218,894</u>
Deficiency of revenues after amortization	<u>\$ (46,468)</u>	<u>\$ (89,210)</u>

Financials

Request for motion:

1. Approve the 2022 Audited Financial Statements
2. Approve the continuation of our existing auditor from Federation of Calgary Communities – Michael Ikehuna



Projects



Priorities



Programs



People



Projects



Priorities



Programs



People

Elevator

Community
Garden &
Benches

Playground

Daycare

\$650,000

Building
Sign

Rink
Landscaping

Large facility
improvements
(furniture, storage)

Security
System

Parking Lot

Facility odds and ends
(laundry, speakers, etc.)

Safety Rails

Elevator

\$150,000

Alberta 



Elevator

Building
Sign

\$60,000

The
Schreiner
Family



WRCA

Elevator

Community
Garden &
Benches

\$55,000

Building
Sign



Community
Donors 



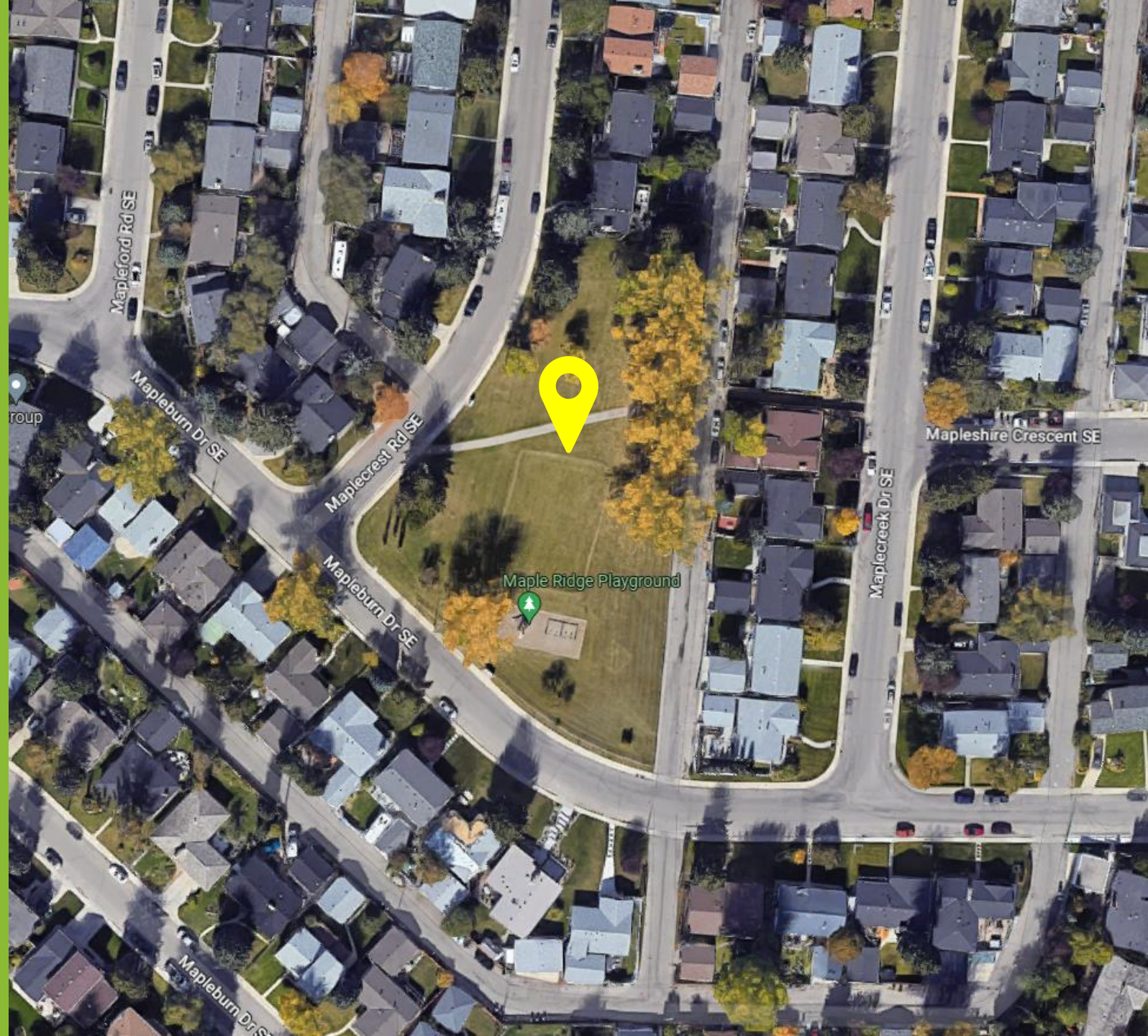


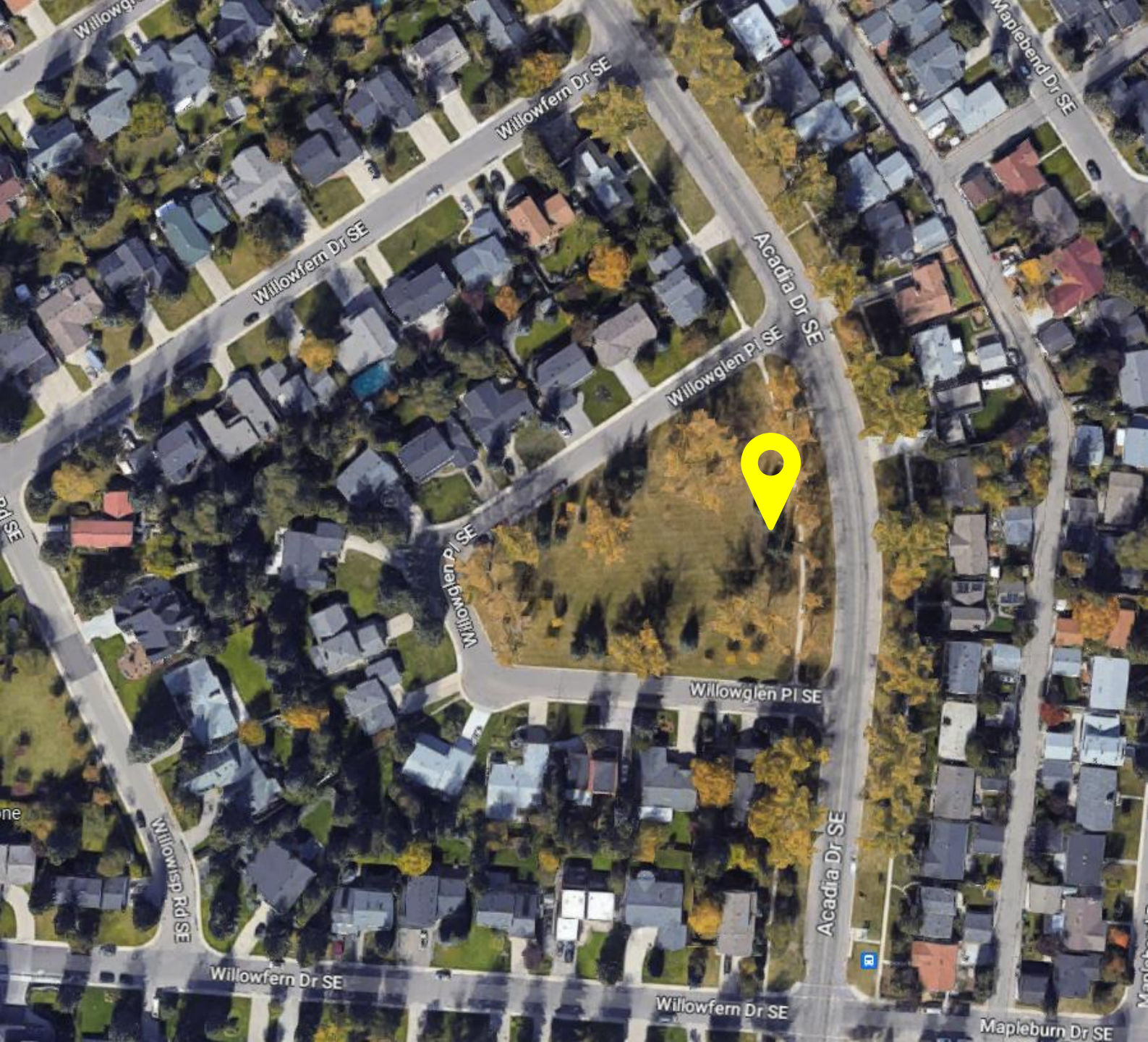
Benches – By Community For Community



Maple Ridge Dog Run

Mapleburn Playground

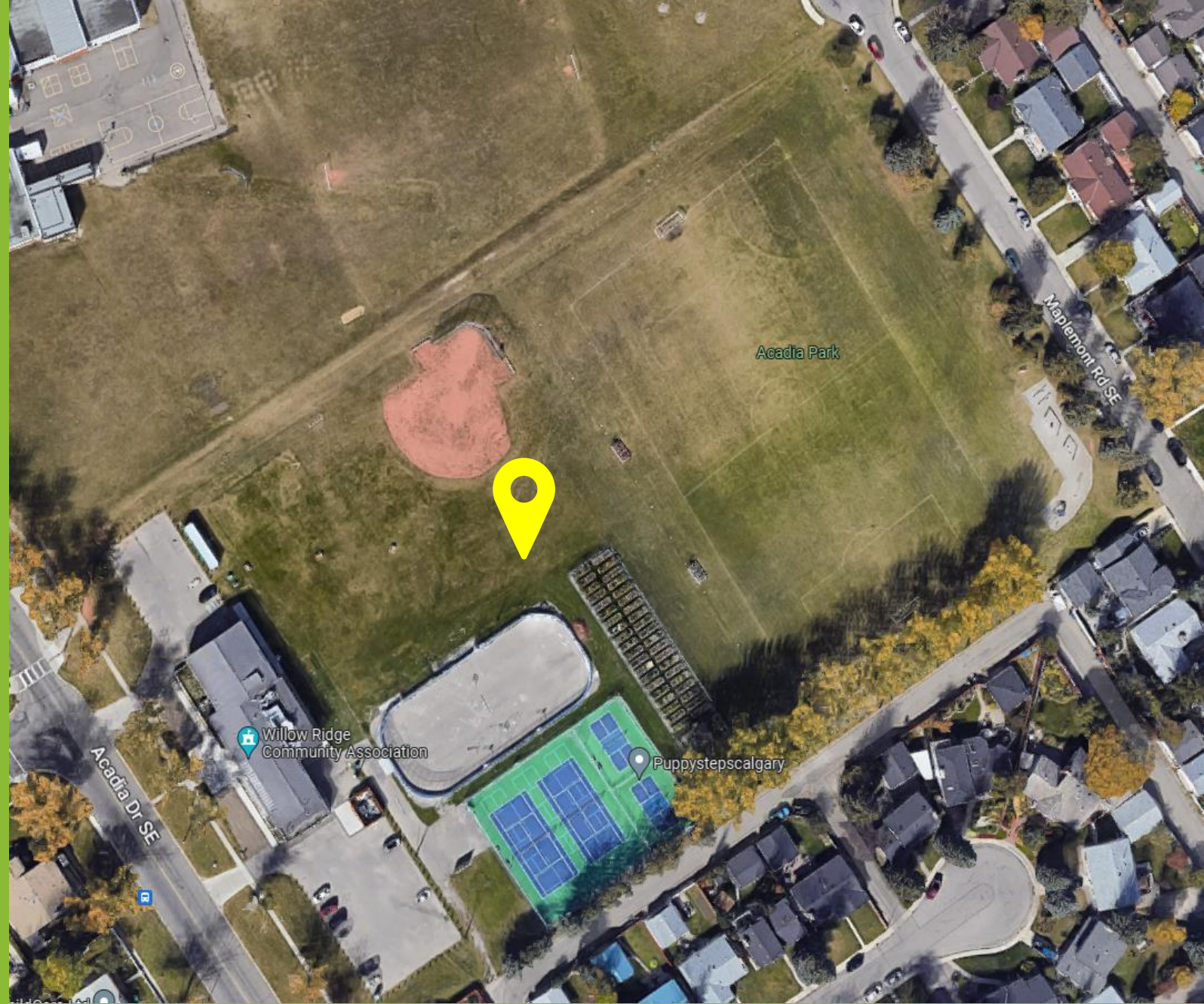




Willowglen Place

WRCA

**2 Benches
3 Picnic Tables**





Bench Donation Program

\$1,000

Elevator

**Community
Garden &
Benches**

**Building
Sign**

Elevator

Community
Garden &
Benches

Playground

Building
Sign

\$100,000

Calgary



Alberta

Parks Foundation

Calgary

BDI
PLAY DESIGNS







Elevator

**Community
Garden &
Benches**

Playground

**Building
Sign**

Elevator

Community
Garden &
Benches

Playground

Daycare

Building
Sign

\$150,000+

KIDSClub

Elevator

Community
Garden &
Benches

Playground

Daycare

Building
Sign

Rink
Landscaping

\$17,000

Calgary



Elevator

Community
Garden &
Benches

Playground

Daycare

Building
Sign

Rink
Landscaping

Large facility
improvements
(furniture, storage)

\$30,000



WRCA

Elevator

Community
Garden &
Benches

Playground

Daycare

Building
Sign

Rink
Landscaping

Large facility
improvements
(furniture, storage)

\$10,000+

Mural

Facility odds and ends
(laundry, speakers, etc.)



WRCA



Elevator

Community
Garden &
Benches

Playground

Daycare

Building
Sign

Rink
Landscaping

Large facility
improvements
(furniture, storage)

Security
System

Mural

Facility odds and ends
(laundry, speakers, etc.)

Alberta
\$25,000

Elevator

Community
Garden &
Benches

Playground

Daycare

Building
Sign

Rink
Landscaping

Large facility
improvements
(furniture, storage)

Security
System

Mural

Facility odds and ends
(laundry, speakers, etc.)

Safety Rails

 **WRCA**
\$20,000

Elevator

**Community
Garden &
Benches**

Playground

Daycare

**Building
Sign**

**Rink
Landscaping**

**Large facility
improvements
(furniture, storage)**

**Security
System**

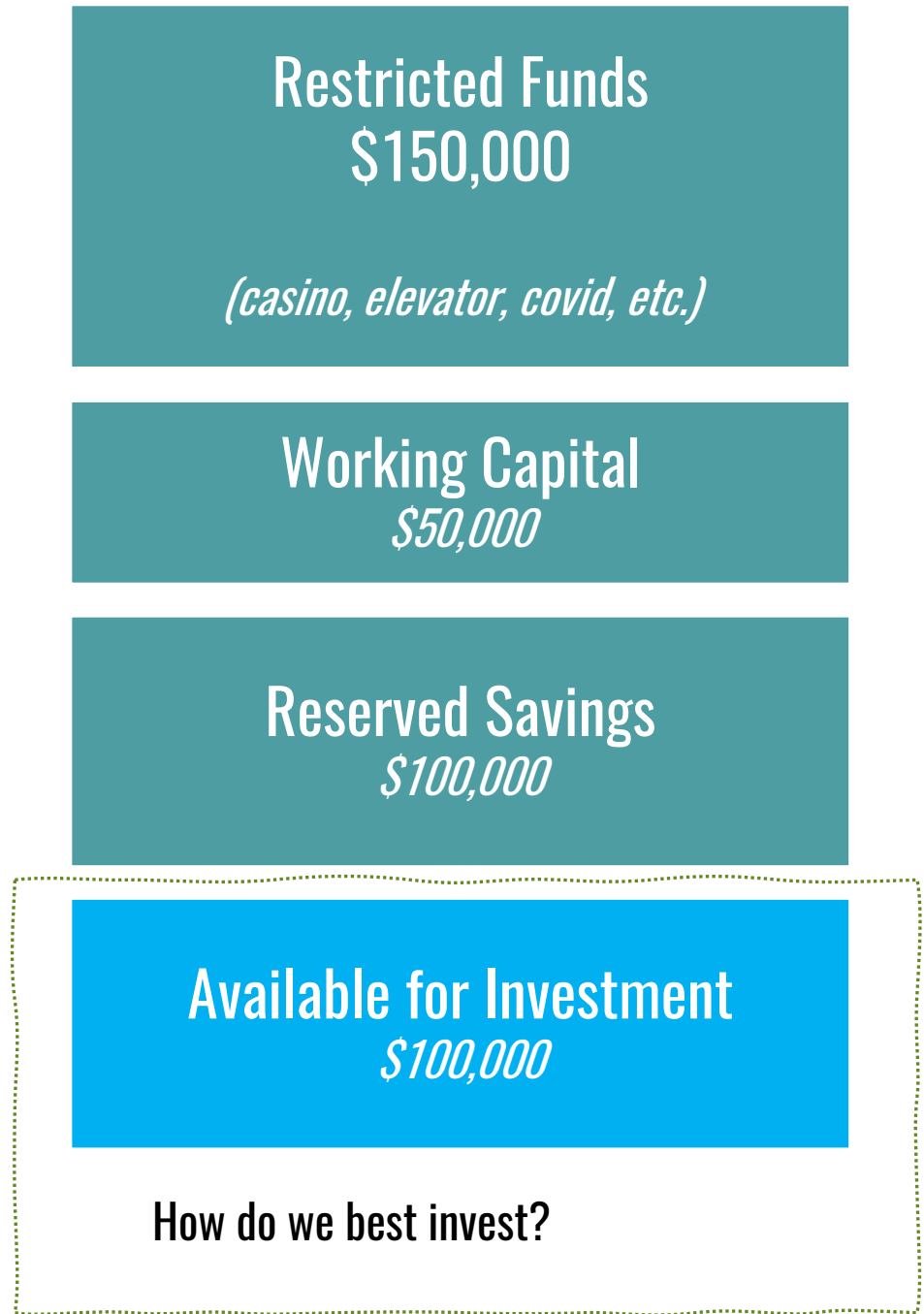
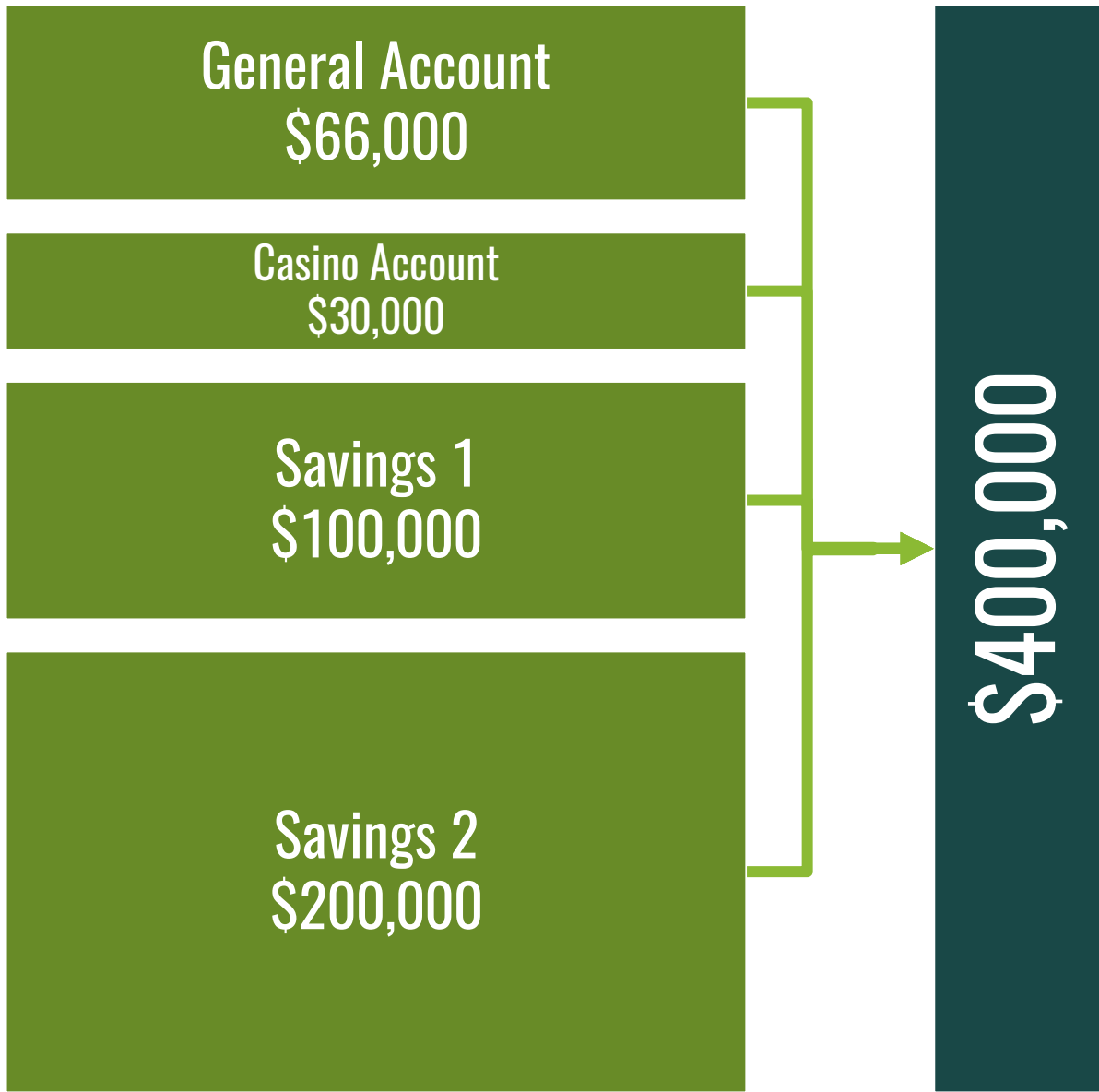
Parking Lot

Mural

**Facility odds and ends
(laundry, speakers, etc.)**

Safety Rails

\$60,000+





Projects



Priorities

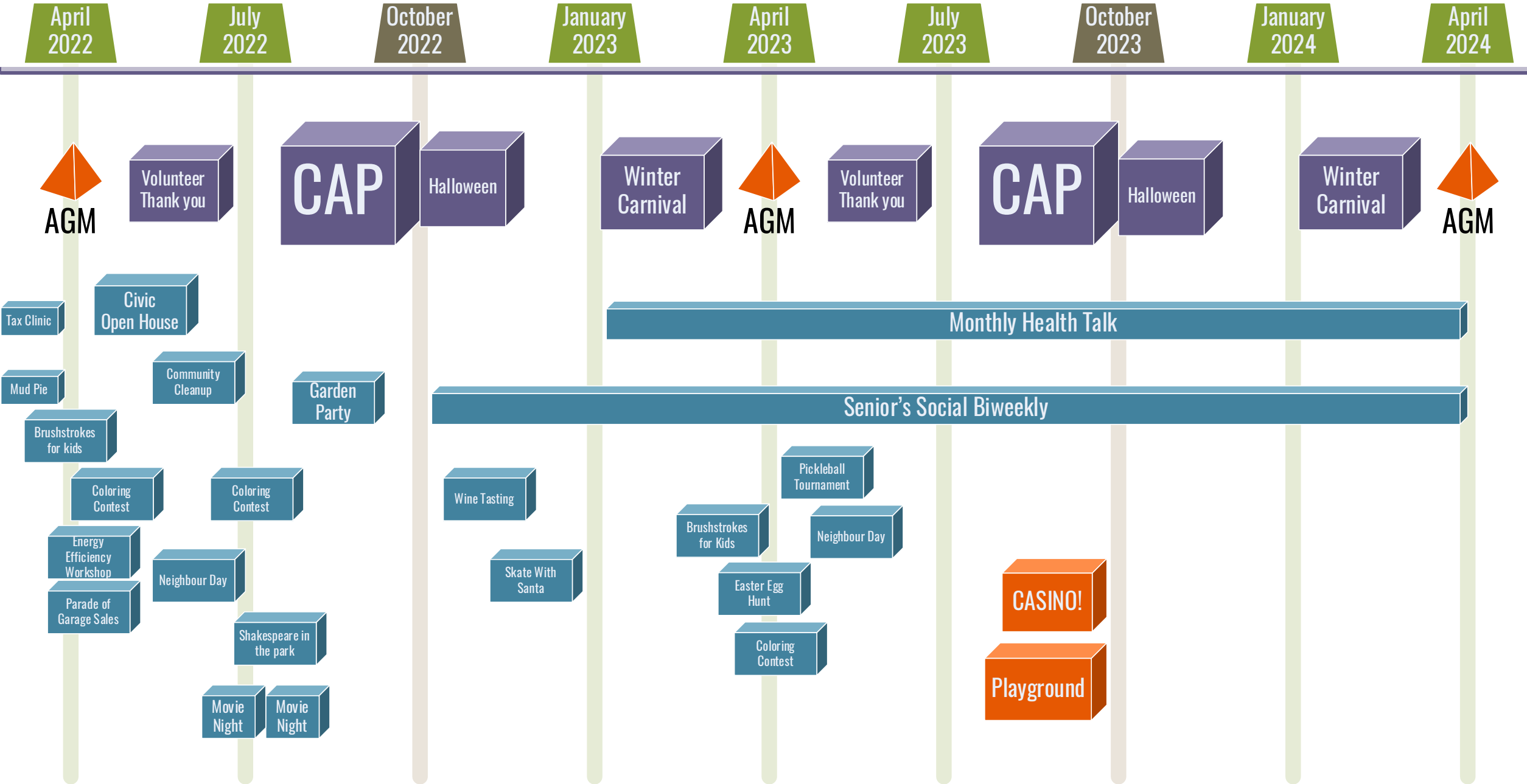


Programs

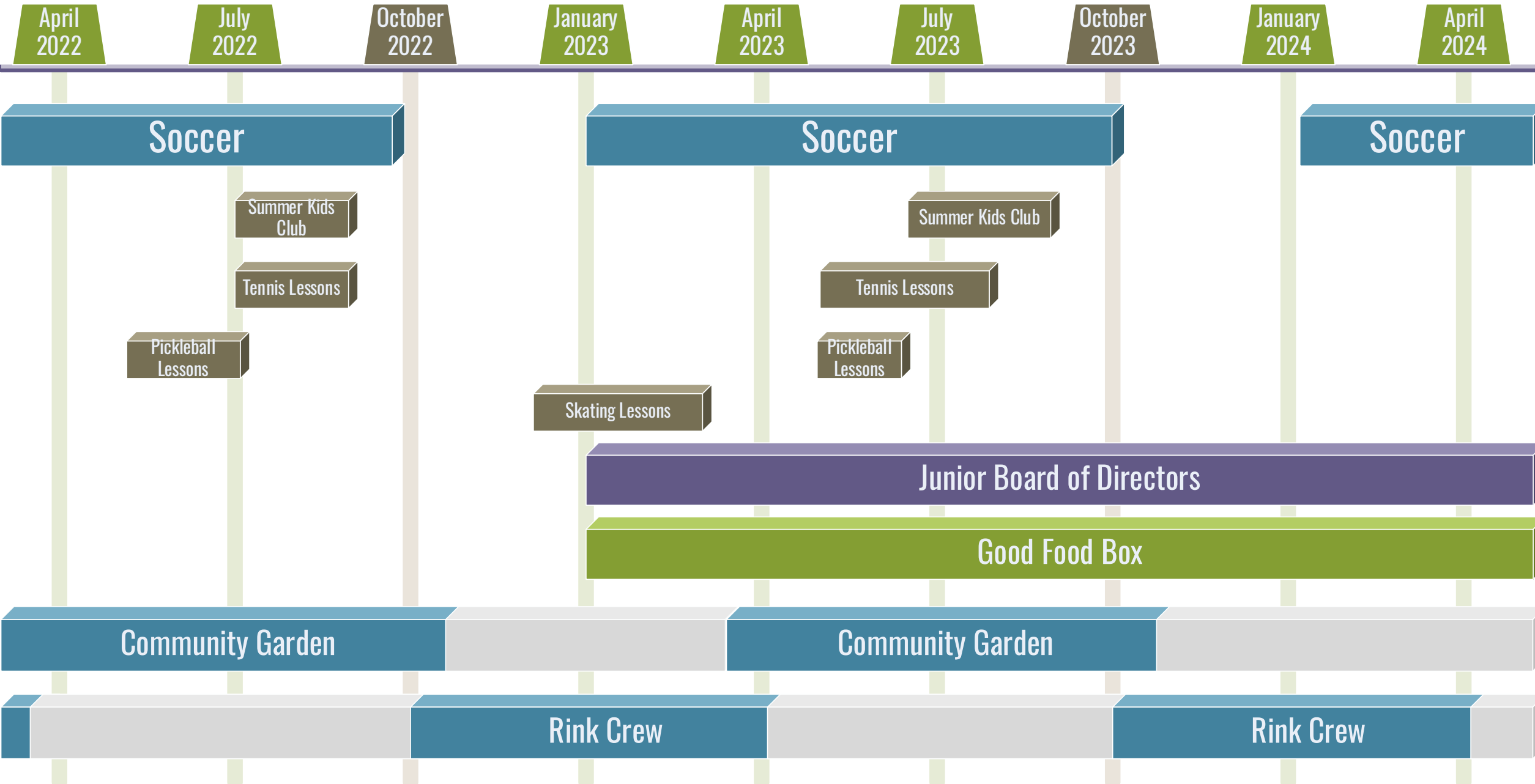


People

Community Events



Community-Led Programs





Projects



Priorities



Programs



People

Our 2021-2027 strategy

Community Experience

1

Membership
Value

Programs and Services

Volunteer
Experience

Communication and
Engagement

Organizational Capability

2

Collaboration

Operational
Resiliency

Financial
Sustainability

Investment
Planning

Community
Advocacy

Strategic Pillars

Stewardship

Provide value to our community

Properly manage our assets and people



Complete our projects!

**See through the completion of our many
capital projects**



Community Advocacy

**Local Area Planning + Development
Traffic**



Investment Planning

**What do our facility and outdoors look like
in 2, 5, 10+ years?**

(baseball diamond, seating, parking, etc.)



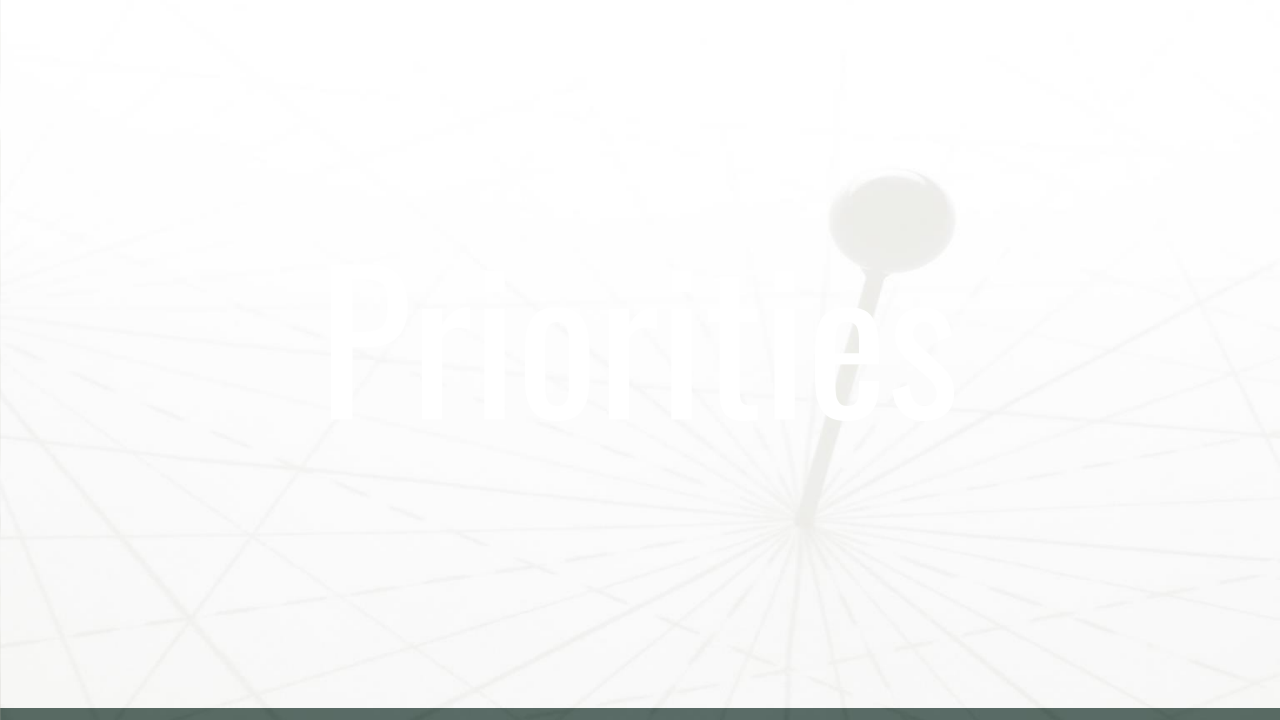
Priorities

Organizational Resiliency

Finding and Supporting Volunteers
Board → Move to Committees



Projects



Priorities



Programs



People

**Thank you
WRCA Team**

A desk with stationery items including a pencil holder, paper clips, and rolled-up documents. The background is a dark teal color with a white horizontal line above the text. The text is in a large, bold, white sans-serif font. The desk items are in a lighter teal color and are slightly out of focus.

A woman and a man are high-fiving in an office setting. The woman is on the left, wearing a dark blazer, and the man is on the right, wearing a dark long-sleeved shirt. They are both smiling and looking at each other. The background shows a modern office with a window, a desk with a laptop, and a shelf with a potted plant. The text "Thank you WRCA Members" is overlaid in large white font.

**Thank you
WRCA Members**

WRCA Member Growth

February 2022

588 Members

421 Family
47 Individual
8 Business
101 Senior
11 Court



March 2023

839 Members (+43%)

568 Family (+35%)
70 Individual (+49%)
18 Business (+125%)
183 Senior (+81%)

A woman in a grey blazer and a man in a teal shirt are high-fiving in an office. The woman is on the left, and the man is on the right. They are both smiling and looking at each other. The background shows a modern office with a window, a desk with a laptop, and a shelf with a plant. The text "Thank you Business Members" is overlaid in large white font.

**Thank you
Business Members**

Business Member Participation

- **Dan Curle, Meadows Mile Pharmacy**
 - Monthly Health Talks
- **Maggie Fox, Canyon Meadows Retirement Residence**
 - Provide fresh baked goodies at our Senior's Coffee and AGM
- **Shirley & Jeff Mikolajow, RE/MAX First**
 - Supported with Popcorn for Movie in the Park, Goodie Bags for Halloween party, Sign leader
- **Justyna Jakimowicz, Royal LePage Benchmark**
 - Supported with Skate with Santa, Easter Egg Hunt
- **Topps Pizza, Violet & Co. Florists, Broken Plate**
 - Gift cards



**Thank you
Donors & Sponsors**



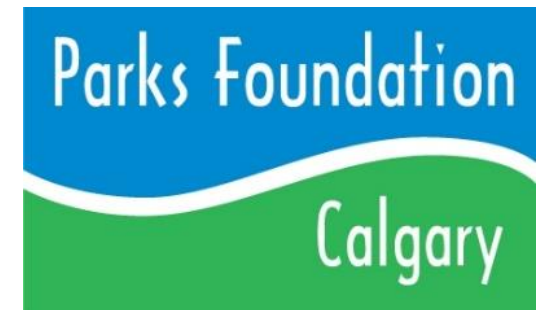
2023 Donors



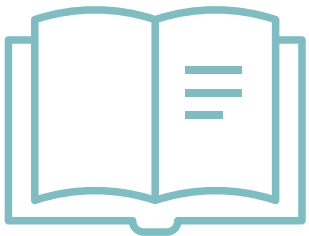
The
Schreiner
Family

**Community
Donors** 

**Local
Businesses**



**Thank you
WRCA Volunteers**





Willow Ridge Community GARDEN

- Built in 2009 -



2009

Community Garden was built
40 boxes total

Special Thanks To

Willow Ridge Community Association • City of Calgary • Burnco • Rona
Calgary Co-op • Southcentre Mall • Bond Construction
Sky-Ann Trucking • Bryce Ingram

2019

12 boxes rebuilt

Corporate Sponsors

Home Depot

2022

Community Garden Expansion Project
6 boxes removed due to increasing shade
22 boxes rebuilt and 16 new boxes added

Special Thanks To



with the support of
Parks Department - Calgary

Canada



CALGARY FOUNDATION
Neighbourhoods



Corporate Sponsors



ROYAL PIZZA



Individual Sponsors

Ian & Patti Pietersma • Janice and Mike Patterson • Robert Montgomery
The Pearen Family • Dixi Anderson • Donna Staples • Anonymous Donors

2023 Rink Crew Statistics November 5 – March 20

1,000s of volunteer hours

130 Skating Days

18 Ollie operators

433 Ollie Rink Floods



Volunteer of the Year

Volunteer of the Year

Christy Linn

2023-24 Board of Directors Nominees

Name	2022-2023 Role	2023-2024 Role
Andres Galindo	Strategy	Strategy
Ashlyn Beatty	Member at Large	
Bibiana Rickova	Member at Large	
Chris Nyberg	Casino, Trico Rep	Vice President
Don Boykiw	Funding	Funding
Dustan Byrnes	Secretary	Secretary
Gord Rouse	Civic Affairs	Civic Affairs
Greg Humphreys	Member at Large	
Haley Anderson-Hartos	Social	Member at Large
Jason Carling	President	President
Kody Shiels	Treasurer	Treasurer
Marshall Horne	Member at Large	Member at Large
Mike Krisa	Member at Large	Member at Large
Peter Gibson	Vice President (Acting), Facilities	Member at Large
Roger Lohrey	Member at Large	Member at Large
Tom Firth	Communications	Member at Large
Jecielle Alfonso		Member at Large
David Hughes		Facilities

Close → Motion to adjourn

Motion to adjourn the meeting